

---

# DFA U.S. Small Cap Fund

## Management Report of Fund Performance

*For the Year ended December 31, 2008*

The annual management report of fund performance contains financial highlights but does not contain the complete annual financial statements of the Fund. You can get a copy of the annual financial statements at your request, and at no cost, by calling Dimensional Fund Advisors Canada ULC, formerly Dimensional Fund Advisors Canada Inc. ("Dimensional") collect at 604-685-1633, by writing to Dimensional at 1500 West Georgia Street, Suite 1520, Vancouver, BC, Canada, V6G 2Z6 or by visiting Dimensional's website at [www.dfacanada.com](http://www.dfacanada.com) or SEDAR at [www.sedar.com](http://www.sedar.com).

Unitholders may also contact Dimensional using one of these methods to request a copy of the Fund's proxy voting policies and procedures, proxy voting disclosure record, or quarterly portfolio disclosure.

---

# DFA U.S. Small Cap Fund

## Management Report of Fund Performance

### Investment Objective and Strategies

The DFA U.S. Small Cap Fund (“Fund”) pursues long-term capital growth by investing primarily in securities of small U.S. companies.

The Fund will generally purchase a broad and diverse group of readily marketable common stocks of small U.S. companies traded on an exchange or on the over-the-counter market. Generally, size is determined based on market capitalization.

### Risk

There were no material changes to the Fund over the course of the year affecting the overall risk exposure. The Fund will continue to be fully exposed to foreign market risk, as well as the risks associated with investments in small company stocks, which may behave differently from conventional benchmarks such as the Russell 2000® Index (“Index”). Currency movements had a positive effect on the Fund’s returns over the past year but currency risk will remain in the future. The Fund engages in securities lending transactions and, as a result, may be exposed to securities lending risk. Securities lending risk includes the risk that the value of collateral held by the Fund may be insufficient to fully replace loaned securities and the risk of defaults on the obligations to return the securities to the Fund. These risks may make an investment in the Fund riskier than if the Fund did not lend securities. Investors are encouraged to read the description of securities lending risk contained in the simplified prospectus. The Fund will also continue to be exposed to the other risks described in the Fund’s simplified prospectus.

### Results of Operations

The Fund held 1,657 stocks as at December 31, 2008 and was essentially fully invested in equities throughout the period. Average cash levels were in general less than 1% of the Fund’s assets. As a result of the Fund’s investment strategy, performance was determined principally by broad structural trends in the U.S. equity market, rather than the behaviour of a limited number of stocks. For the year ended December 31, 2008, the U.S. size premium was not strong; micro cap and mid cap stocks underperformed large and small cap stocks. Value stocks generally outperformed growth stocks. In addition, the value of the Canadian dollar fell approximately 18.3% relative to the U.S. dollar, improving net returns of the U.S. dollar-denominated securities when expressed in Canadian terms.

For the year ended December 31, 2008, total returns were -24.13% for the Class F units, -24.95% for the Class A units, and -18.92% for the Index. Results for the Index are not diminished by management, administrative, and applicable U.S. withholding tax expenses associated with managing a portfolio of securities. Relative to the Index, underperformance of the Class F and Class A units was primarily due to the Fund’s greater allocation to micro cap stocks, which underperformed small cap stocks, and the better performance of mid cap stocks in the

Index. Micro caps stocks, which comprised approximately 38% of the Fund compared to approximately 21% of the Index, lagged the Index by approximately eight percentage points. The largest small company stocks held by the Fund underperformed similar size stocks held by the Index.

Net returns of Class A units were diminished by a trailer fee payable to securities dealers. Dealers generally pay a portion of these fees to investment professionals for services they provide to their clients.

### Recent Developments

U.S. equity markets experienced high levels of volatility during the year ended December 31, 2008. The behaviour of equity markets has been driven in large part by the contraction of lending in credit markets. In addition to heightened volatility, the cross-sectional dispersion of stock returns in equity markets has increased relative to previous levels, and returns even within each asset class have differed greatly. Dimensional Fund Advisors Canada ULC, formerly Dimensional Fund Advisors Canada Inc. (“Dimensional”) will continue to pursue a disciplined quantitative approach to identify securities for purchase or sale. In contrast to many investment firms, Dimensional does not seek to predict the future course of business conditions, stock market trends, interest rates, or currency exchange rates. Dimensional believes that securities markets are highly competitive and prices reflect available information quickly enough that efforts to outperform the market ordinarily promise little or no payoff after taking account of research and transaction costs. Dimensional seeks to capture a market rate of return associated with various broad risk factors while minimizing company or industry risk through diversification.

Section 14.2 of amended National Instrument 81-106 (“NI 81-106”) issued by the Canadian Securities Administrators, that came into force on September 8, 2008, requires an investment fund to calculate its daily Net Asset Value for the purchase and redemption of units based on the fair value of the investment fund’s assets and liabilities as determined using the closing price of investments. The Fund has not changed its valuation methodology in its investments in connection with the adoption of this requirement. Changes to the Fund’s accounting policies are fully disclosed in the notes to the financial statements.

### Related-Party Transactions

Dimensional is the manager, trustee, and principal portfolio advisor of the Fund. As manager, Dimensional is responsible for the overall management and administration of the Fund. As trustee, Dimensional holds legal title to the Fund’s investments in trust for unitholders. For its services, Dimensional receives a management fee that is calculated as a percentage of the average net asset value of the Fund. This fee is calculated daily and payable monthly.

**DFA U.S. Small Cap Fund**  
Management Report of Fund Performance

As principal portfolio advisor, Dimensional is responsible for managing the investment portfolio of the Fund directly or through sub-advisors. Dimensional has retained its parent company, Dimensional Fund Advisors LP (“Dimensional U.S.”), to act as the Fund’s sub-advisor. Dimensional U.S. is responsible for investment analysis and decision making, implementing security transactions, selecting broker-dealers, acquiring research information, voting proxies, and monitoring the Fund’s investment guidelines. The fees of the sub-advisor are paid by Dimensional.

Dimensional has adopted written policies and procedures with respect to the supervision and monitoring of the services provided by Dimensional and Dimensional U.S. and received standing instructions from the Fund’s Independent Review Committee (“IRC”) to act in accordance with these policies and procedures. These standing instructions require Dimensional to report to the IRC any material exceptions to compliance with these policies and procedures.

**DFA U.S. Small Cap Fund**  
Management Report of Fund Performance

**Financial Highlights**

The following tables show selected key financial information about the Fund and are intended to help you understand the Fund's financial performance for the past five years. Per unit data is derived from the Fund's financial statements. The net assets per unit presented in the financial statement differs from the net asset value used in calculating purchase and redemption prices for the fund, due to differences in valuation techniques of certain investments.

Ratio and supplemental data is derived from the Fund's net asset value.

During the year, no Class I units were issued and therefore, no information has been presented for this class of units.

**The Fund's Net Assets per Unit (\$) <sup>(1)</sup>**

<b>CLASS A</b>	<b>2008</b>	<b>2007</b>	<b>2006</b>	<b>2005</b>	<b>2004</b>
<b>Net Assets, beginning of year</b>	<b>\$ 10.32</b>	<b>\$ 12.60</b>	<b>\$ 11.04</b>	<b>\$ 10.97</b>	<b>\$ 10.24</b>
<b>Increase (decrease) from operations:</b>					
Total revenue	0.11	0.12	0.09	0.09	0.06
Total expenses	(0.18)	(0.23)	(0.21)	(0.12)	(0.09)
Realized gains (losses) for the year	(0.59)	(0.05)	0.26	0.18	(0.09)
Unrealized gains (losses) for the year	(1.89)	(2.22)	1.51	0.05	0.76
<b>Total increase (decrease) from operations<sup>(2)</sup></b>	<b>\$ (2.55)</b>	<b>\$ (2.38)</b>	<b>\$ 1.65</b>	<b>\$ 0.20</b>	<b>\$ 0.64</b>
<b>Distributions:</b>					
From income (excluding dividends)	—	—	—	—	—
From dividends	—	—	—	—	—
From capital gains	—	—	—	—	—
Return of capital	—	—	—	—	—
<b>Total Annual Distributions<sup>(3)</sup></b>	<b>—</b>	<b>—</b>	<b>—</b>	<b>—</b>	<b>—</b>
<b>Net Assets, end of year</b>	<b>\$ 7.72</b>	<b>\$ 10.32</b>	<b>\$ 12.67</b>	<b>\$ 11.04</b>	<b>\$ 10.97</b>
<b>CLASS F</b>	<b>2008</b>	<b>2007</b>	<b>2006</b>	<b>2005</b>	<b>2004</b>
<b>Net Assets, beginning of year</b>	<b>\$ 10.78</b>	<b>\$ 13.02</b>	<b>\$ 11.29</b>	<b>\$ 11.10</b>	<b>\$ 10.26</b>
<b>Increase (decrease) from operations:</b>					
Total revenue	0.11	0.13	0.10	0.09	0.08
Total expenses	(0.08)	(0.10)	(0.08)	(0.12)	(0.11)
Realized gains (losses) for the year	(0.64)	(0.09)	0.27	0.18	(0.12)
Unrealized gains (losses) for the year	(2.08)	(2.28)	1.61	0.05	0.91
<b>Total increase (decrease) from operations<sup>(2)</sup></b>	<b>\$ (2.69)</b>	<b>\$ (2.34)</b>	<b>\$ 1.90</b>	<b>\$ 0.20</b>	<b>\$ 0.76</b>
<b>Distributions:</b>					
From income (excluding dividends)	—	—	—	—	—
From dividends	(0.01)	—	—	—	—
From capital gains	—	—	—	—	—
Return of capital	—	—	—	—	—
<b>Total Annual Distributions<sup>(3)</sup></b>	<b>(0.01)</b>	<b>—</b>	<b>—</b>	<b>—</b>	<b>—</b>
<b>Net Assets, end of year</b>	<b>\$ 8.14</b>	<b>\$ 10.78</b>	<b>\$ 13.09</b>	<b>\$ 11.29</b>	<b>\$ 11.10</b>

<sup>(1)</sup> This information is derived from the Fund's audited annual financial statements. The net assets per unit presented in the financial statements differs from the net asset value calculated for fund pricing purposes. An explanation of these differences can be found in the notes to the financial statements.

<sup>(2)</sup> Net assets and distributions are based on the actual number of units outstanding at the relevant time. The increase/decrease from operations is based on the weighted average number of units outstanding over the financial period.

<sup>(3)</sup> Distributions were reinvested in additional units of the Fund.

**DFA U.S. Small Cap Fund**  
Management Report of Fund Performance

**Ratios and Supplemental Data**

<b>CLASS A</b>	<b>Dec 31, 2008</b>	<b>Dec 31, 2007</b>	<b>Dec 31, 2006</b>	<b>Dec 31, 2005</b>	<b>Dec 31, 2004</b>
Total net asset value (\$) (000's) <sup>(1)</sup>	10,855	15,730	15,678	10,217	6,357
Number of units outstanding (000's) <sup>(1)</sup>	1,399	1,521	1,238	925	580
Management expense ratio <sup>(2)</sup>	1.82%	1.82%	1.82%	1.80%	1.80%
Management expense ratio before waivers or absorption	1.82%	1.78%	1.81%	2.00%	2.55%
Trading expense ratio <sup>(3)</sup>	0.08%	0.07%	0.04%	0.14%	0.19%
Portfolio turnover rate <sup>(4)</sup>	36.46%	27.29%	12.82%	26.46%	6.87%
Net asset value per unit (\$)	7.76	10.34	12.67	11.04	10.97
<b>CLASS F</b>	<b>Dec 31, 2008</b>	<b>Dec 31, 2007</b>	<b>Dec 31, 2006</b>	<b>Dec 31, 2005</b>	<b>Dec 31, 2004</b>
Total net asset value (\$) (000's) <sup>(1)</sup>	31,894	51,204	49,886	33,527	19,793
Number of units outstanding (000's) <sup>(1)</sup>	3,900	4,742	3,812	2,971	1,783
Management expense ratio <sup>(2)</sup>	0.75%	0.75%	0.75%	0.80%	0.80%
Management expense ratio before waivers or absorption	0.70%	0.67%	0.69%	0.81%	1.48%
Trading expense ratio <sup>(3)</sup>	0.08%	0.07%	0.04%	0.14%	0.19%
Portfolio turnover rate <sup>(4)</sup>	36.46%	27.29%	12.82%	26.46%	6.87%
Net asset value per unit (\$)	8.18	10.80	13.09	11.29	11.10

<sup>(1)</sup> The information is provided as at December 31 of the period shown.

<sup>(2)</sup> Management expense ratio is based on total expenses (excluding broker commissions and other portfolio transaction costs) for the stated period and is expressed as an annualized percentage of daily average net asset value during the period.

<sup>(3)</sup> The trading expense ratio represents total commissions and other portfolio transaction costs expressed as an annualized percentage of daily average net asset value during the period.

<sup>(4)</sup> The Fund's portfolio turnover rate indicates how actively the Fund's portfolio advisor manages its portfolio investments. A portfolio turnover rate of 100% is equivalent to the Fund buying and selling all of the securities in its portfolio once in the course of the year. The higher a fund's portfolio turnover in a year, the greater the trading costs payable by the Fund in the year, and the greater the chance of an investor receiving taxable capital gains in the year. There is not necessarily a relationship between a high turnover rate and the performance of the Fund.

## DFA U.S. Small Cap Fund

### Management Report of Fund Performance

#### Management Fees

Dimensional receives a management fee for its service as manager of the Fund. This fee is calculated as a percentage of the net asset value of the Fund and is calculated daily and payable monthly. The table below shows the annual management fee rates for each class of units of the Fund.

Annual Rate	Class A	Class F
Management fees	1.35%	0.35%

Dimensional pays a trailer fee to dealers out of the management fees received for Class A units of the Fund. These trailer fees are generally calculated as a percentage of the average daily net asset value of Class A units of the Fund held by the dealer's clients or by the dealer on behalf of the clients. The maximum annual trailer fee for the Class A units of the Fund is 1.00%. The balance of the management fees are for the general management and administrative services provided to the Fund. The table below shows a breakdown of the services received by the Fund as a percentage of management fees.

	Class A	Class F
Management and administrative services	26%	100%
Trailer fees	74%	0%
	100%	100%

No management fees are charged to the Fund with respect to Class I units. Instead, each Class I investor pays a separate fee directly to the manager of the Fund. During the period, no Class I units of the Fund were outstanding.

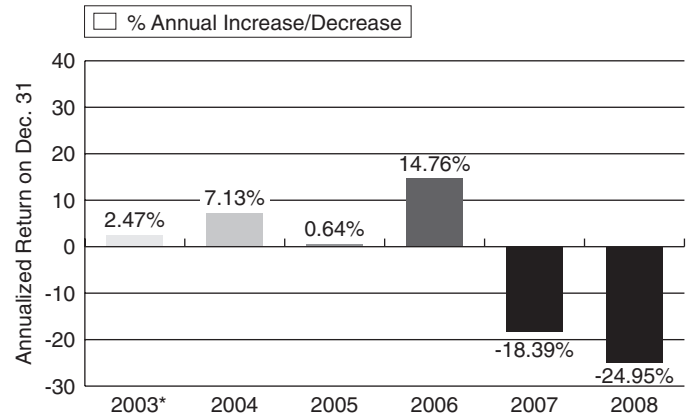
#### Past Performance

The performance information shown assumes that all distributions made by the Fund during the periods shown were reinvested in additional units of the Fund. The performance information does not take into account any sales, redemption, distribution, or other optional charges that would have reduced returns or performance. How the Fund has performed in the past does not necessarily indicate how it will perform in the future. During the period, no Class I units of the Fund were outstanding and therefore, no performance information is presented for this class of units.

#### Year-by-Year Returns

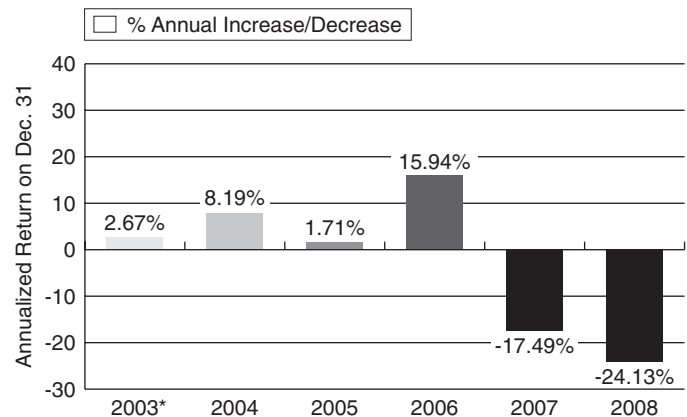
The bar charts show the Fund's annual performance for each of the financial years shown, and how the Fund's performance has changed from year to year. The charts show, in percentage terms, how an investment made on the first day of each financial year would have increased or decreased by the last day of that financial year.

#### DFA U.S. Small Cap Fund, Class A



\* The information for 2003 is for the period from October 29, 2003 to December 31, 2003.

#### DFA U.S. Small Cap Fund, Class F



\* The information for 2003 is for the period from October 24, 2003 to December 31, 2003.

# DFA U.S. Small Cap Fund

## Management Report of Fund Performance

### Annual Compound Returns

The following table compares the Fund's historical annual compound total returns for the periods shown ending on December 31, 2008. The historical annual compound total returns are also compared to the Index.

Index returns are calculated in Canadian dollars on a total return basis; that is, all distributions are reinvested. The Index tracks the price movements of the common stocks of 2,000 of the smallest (by market capitalization) U.S. companies. Results for the Index are not diminished by management fees, administrative expenses or taxes associated with managing a portfolio of securities.

#### Percentage Return:

	1-Year	3-Year	5-Year	10-Year	Since Inception
Class A	-24.95%	-11.09%	-5.40%	n/a	-4.77%
Russell 2000®					
Index	-18.92%	-7.03%	-2.11%	n/a	-1.37%

#### Percentage Return:

	1-Year	3-Year	5-Year	10-Year	Since Inception
Class F	-24.13%	-10.13%	-4.40%	n/a	-3.75%
Russell 2000®					
Index	-18.92%	-7.03%	-2.11%	n/a	-1.36%

### Summary of Investment Portfolio

as at December 31, 2008

Sector Mix	% of Fund's Net Asset Value
Energy	4.56
Materials	4.06
Industrials	15.83
Consumer Discretionary	13.22
Consumer Staples	4.45
Health Care	14.10
Financials	22.91
Information Technology	15.20
Telecommunications Services	1.05
Utilities	3.58
Cash and Cash Equivalents	2.89
Net Other Assets	(1.85)
	<u>100.00</u>

### Top 25 Issuers

	% of Fund's Net Asset Value
Cash and Cash Equivalents (includes short-term investments)	2.89
Gentiva Health Services Inc.	0.32
First Niagara Financial Group Inc.	0.32
CNA Surety Corp.	0.31
Prosperity Bancshares Inc.	0.27
Trustmark Corp.	0.25
NewAlliance Bancshares Inc.	0.25
FirstMerit Corp.	0.25
FNB Corp.	0.25
Beacon Roofing Supply Inc.	0.24
UMB Financial Corp.	0.24
Corinthian Colleges Inc.	0.24
Tractor Supply Co.	0.24
Harleysville National Corp.	0.24
Casey's General Stores Inc.	0.23
Landauer Inc.	0.23
Greatbatch, Inc.	0.23
Alaska Air Group Inc.	0.22
Rock-Tenn Co., Class A	0.22
Datascope Corp.	0.22
Hancock Holding Co.	0.22
Aaron Rents Inc.	0.22
Avocent Corp.	0.22
AMERIGROUP Corp.	0.22
International Bancshares Corp.	0.22
	<u>8.76</u>

Total Net Asset Value \$42,778,844

All holdings of the Fund are long positions.

The Summary of Investment Portfolio may change due to the Fund's ongoing portfolio transactions. Quarterly updates are available within 60 days of each quarter end where an annual or interim report is not published by visiting [www.dfacanada.com](http://www.dfacanada.com) or by calling Dimensional collect at 604-685-1633 or by writing to Dimensional at 1500 West Georgia Street, Suite 1520, Vancouver, BC, Canada, V6G 2Z6.

### Forward Looking Statements

In preparing this document, Dimensional is required to exercise some degree of prediction or projection. As a result, this document may contain forward-looking statements relating to anticipated future events, results, performance, decisions, circumstances, opportunities, risks or other matters. By their nature, these forward-looking statements require Dimensional to make assumptions and are subject to inherent risks and uncertainties. In particular, there is a risk that Dimensional's predictions and other forward-looking statements will not prove to be accurate. A number of factors could cause actual events, results, performance, etc. to differ materially from the targets, expectations, estimates, or intentions expressed or implied in the forward-looking statements. These factors could, among others, include market and general economic conditions, interest rates, regulatory and statutory developments, the effects of competition in the geographic and business area in which the Fund may invest, and the risks detailed from time to time in the Funds' simplified prospectus. For these reasons, it is important that readers do not place undue reliance on any forward-looking statements.

